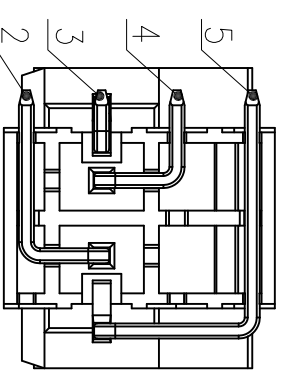
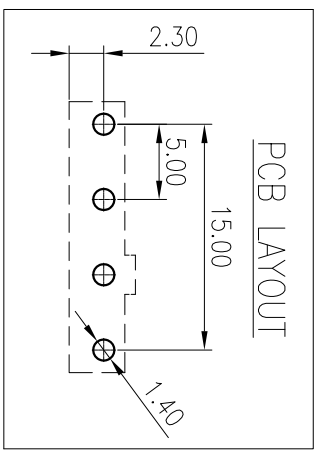
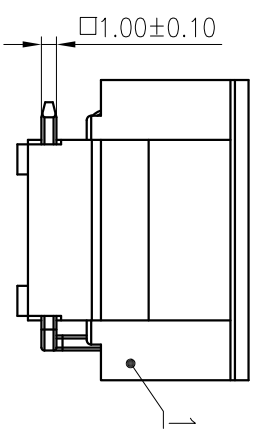
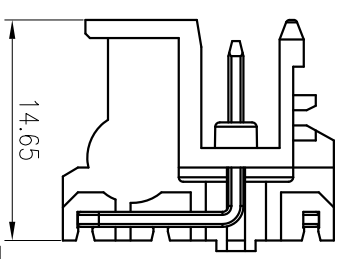
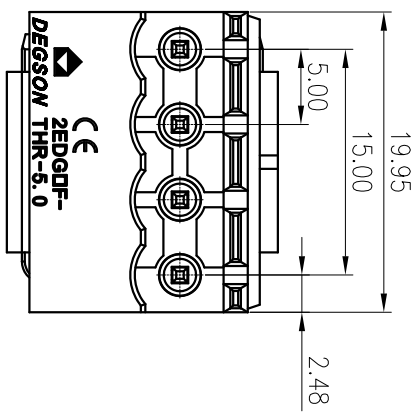
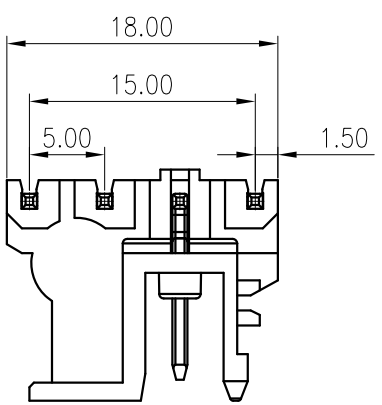
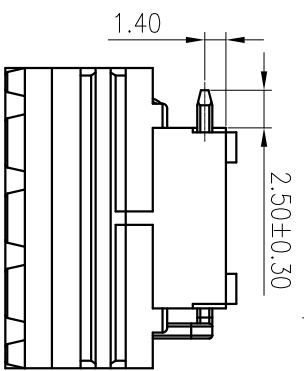


公差表/General tolerances(mm)		0.1/10
0	>3	~
3	6	~
6	10	~
10	18	~
18	30	~
30	50	~
50	80	~
80	120	~
120	180	~
180	250	~
250	315	~
315	400	~
400	500	~
500	>500	~
±0.12 ±0.18 ±0.22 ±0.26 ±0.31 ±0.37 ±0.47 ±0.57 ±0.63 ±1.05 ±1.15 ±1.60 ±2.20 ±2.50		±2



ITEM	NAME OF PART	MATERIAL	NOTES
5	Pin4	Copper	Sn Plated
4	Pin3	Copper	Sn Plated
3	Pin2	Copper	Sn Plated
2	Pin1	Copper	Sn Plated
1	Housing	PA4T	UL94V-0

UL 标准/UL Standard:	B	C	D
额定电压/Rated Voltage(V)/Current(A)	300/15	/	/
IEC 标准/IEC Standard:			
过压类别/Overvoltage Category/污染等	III/3	III/2	II/2
级/Pollution Degree			
额定电压/电流/Rated Voltage(V)/Current(A)	250/20	320/20	400/20
额定脉冲电压(KV)/Rate Impulse Voltage(KV)	4	4	4
面距/Pitch(mm)/线数范围/Poles	5.0/N=04P		4
使用温度范围/Operating temperature(°C)	-40~+130		
符合RoHS环保要求/Conform to RoHS	Yes		

MATERIAL:	/	SURFACE:	/
MAT NO.:	/		
STATUS:	/		
APPD:			
CHKD:			
DRAFT:	CenMZ 2020.06.12	DRAWING NO.:	2EDGLF-THR-5.0-C02
SIZE:	A4	SCALE:	2:1
TYPE:	CUSTOMER DRAWING	REV	TO
		SHEET	1/1

REV	ECN	DESCRIPTION	DRAFT	DATE

REV	ECN	DESCRIPTION	DRAFT	DATE

D

B

A

C